

SCOTT &  
STAPLETON

MOORCROFT  
, SS4 3LB  
£1,095 PCM







## MOORCROFT

, SS4 3LB

**£1,095**

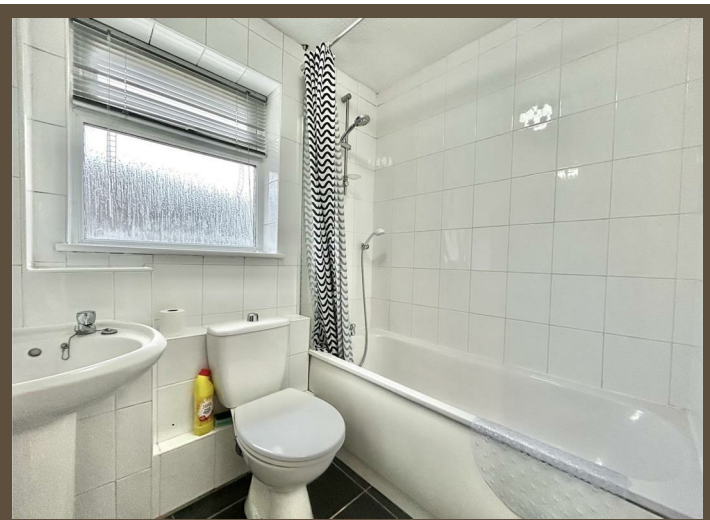
**pcm**

Scott and Stapleton are delighted to offer this refurbished recently first floor two bedroom flat situated in a quiet cul-de-sac location in Ashingdon. The property benefits from good size lounge/diner, fitted kitchen with oven and hob plus white goods, modern fitted three piece bathroom suite, double glazing and gas central heating. In addition, there is an allocated off street parking space for one car.



# SCOTT & STAPLETON

— LETTINGS —



Entrance hall

Lounge

4.78m x 3.48m (15'8" x 11'5")

Kitchen

2.69m x 2.26m (8'9" x 7'4")

Bedroom One

3.61m x 2.95m (11'10" x 9'8")

Bedroom Two

2.34m x 2.13m (7'8" x 6'11")

Three piece bathroom

Allocated parking space

